

Lecture 6 Activity Solutions

Activity 1

Note that various ER diagrams could work, not just the following one!

Draw an E/R diagram for football

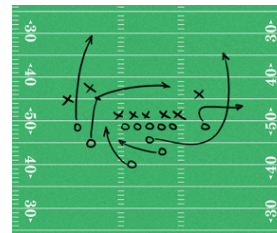
Use the following simplified model of a football season
(concepts to include are underlined):



Teams play each other in Games. Each pair of teams can play each other multiple times



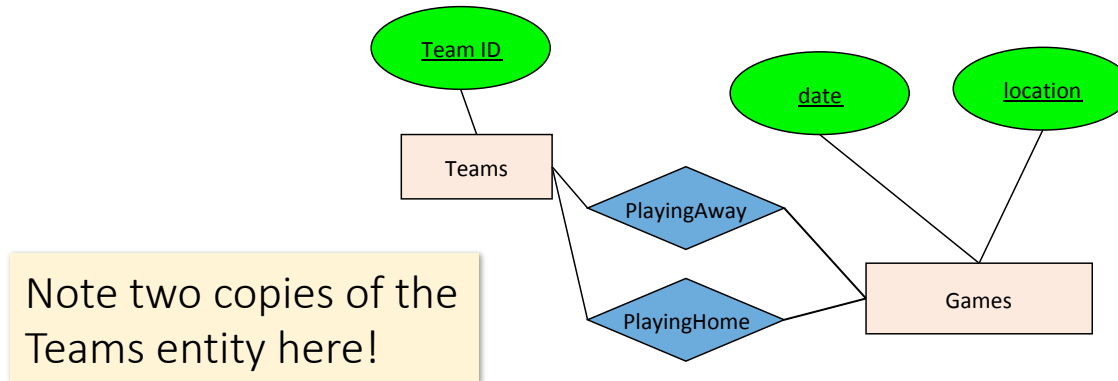
Players belong to Teams (assume no trades / changes).



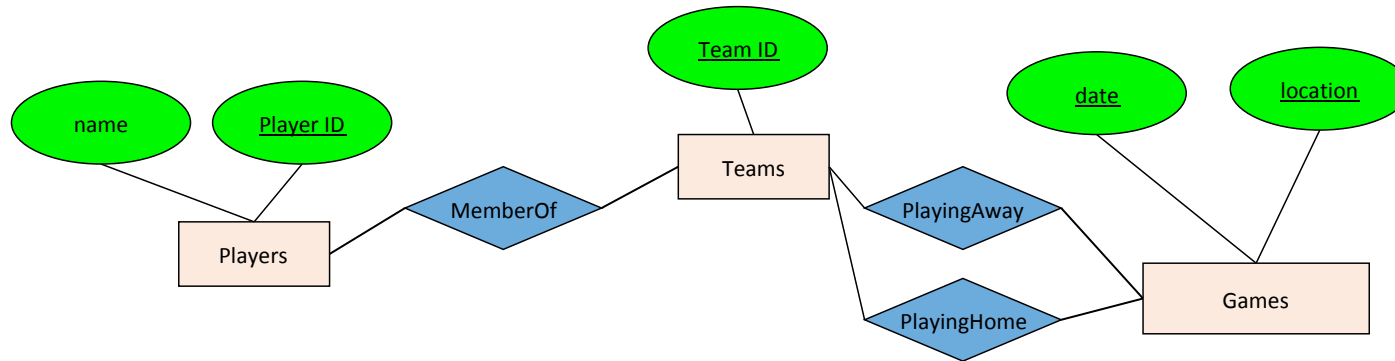
A Game is made up of Plays that result in a yardage gain/loss, and potentially a touchdown



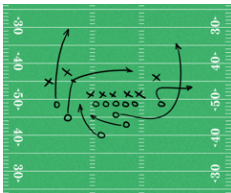
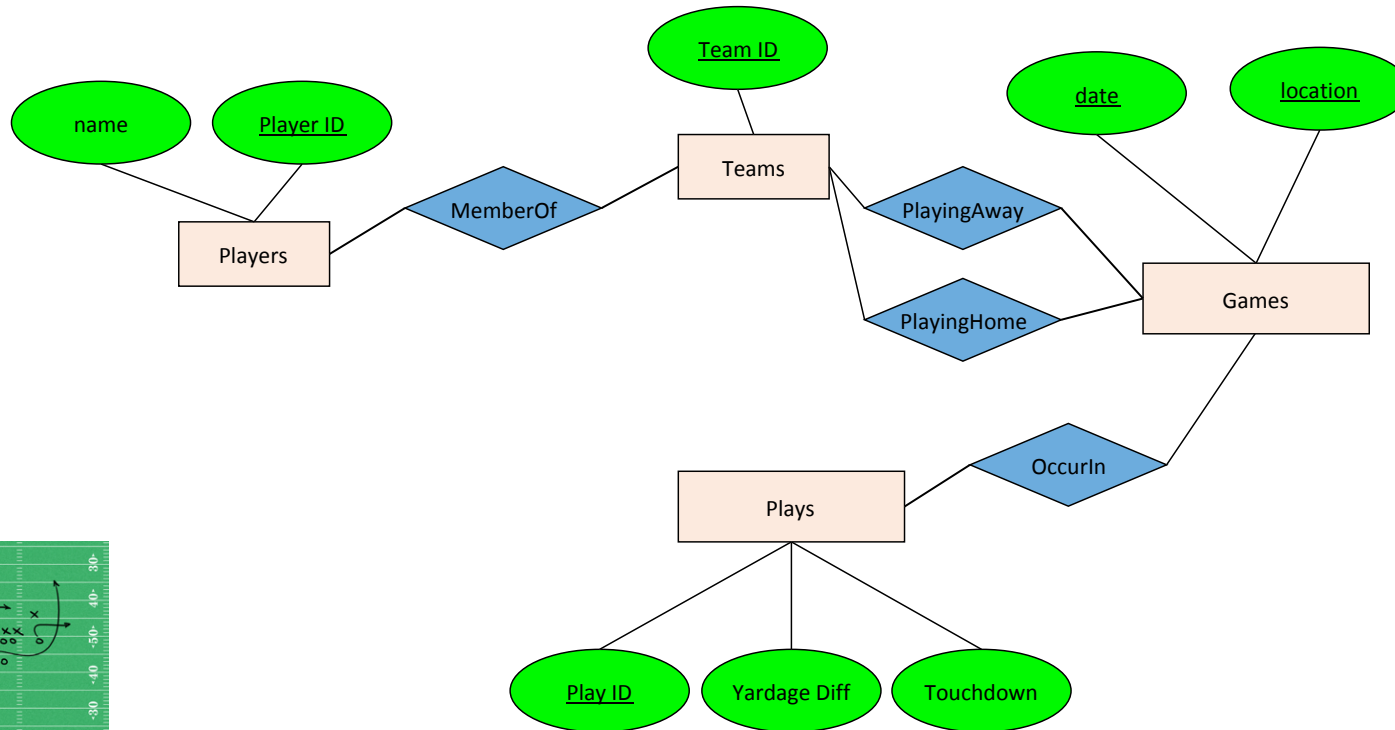
A Play will contain either a Pass from one player to another, or a Run by one player



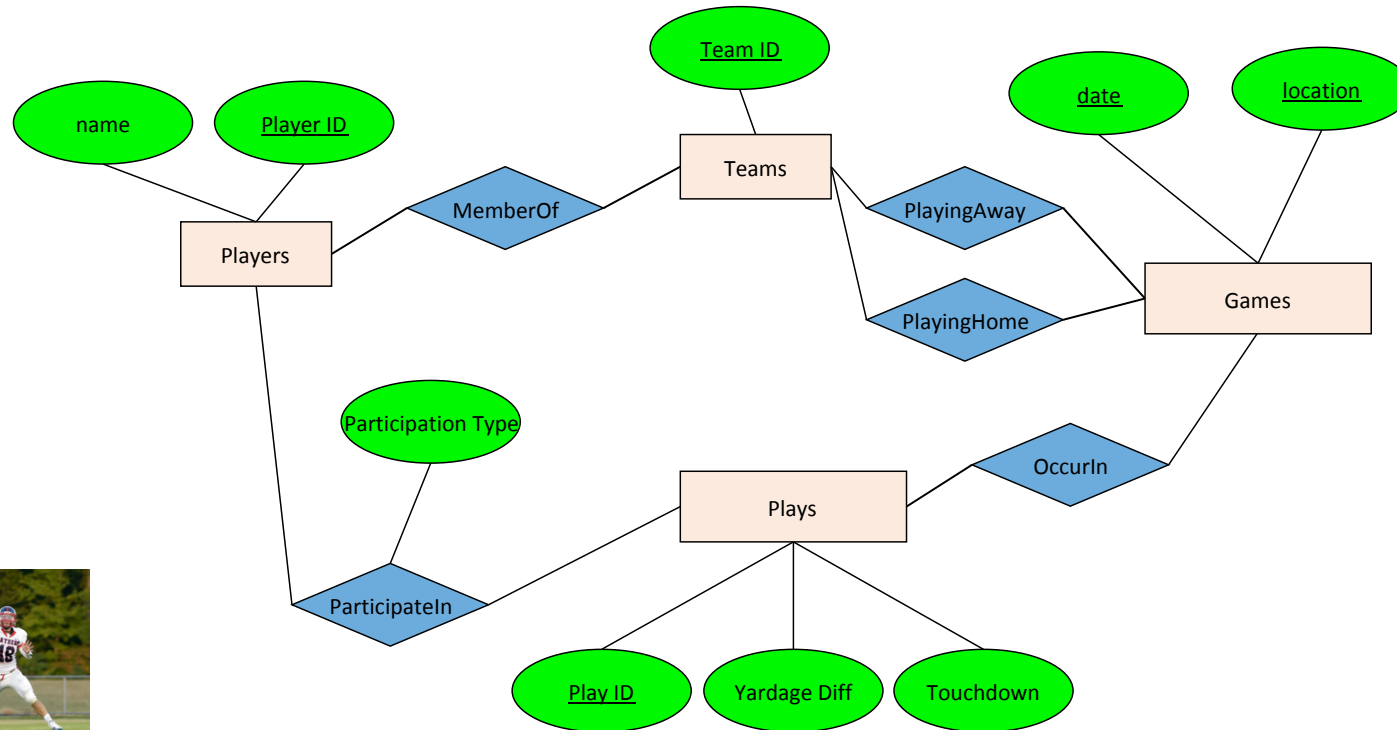
Teams play each other in Games. Each pair of teams can play each other multiple times



Players belong to Teams (assume no trades / changes)



A Game is made up of Plays that result in a yardage gain/loss, and potentially a touchdown



A Play will contain either a Pass from one player to another, or a Run by one player